



## **Rabbit anti CD156b (NT) Polyclonal Antibody**

**Alternative Name(s): ADAM8; CD156; MS2**

### **Order Information**

- **Description:** CD156b (NT)
- **Catalogue:** 600-880
- **Lot:** See label
- **Size:** 100ug/200ul
- **Host:** Rabbit
- **Clone:** nan
- **Application:** IHC(P), WB
- **Reactivity:** Hu, Ms

### **ANTIGEN PREPARATION**

A synthetic peptide corresponding to the human CD156b at Pro- domain. This sequence is identical among human, mouse and/or rat origins.

### **BACKGROUND**

CD156b is a type I transmembrane glycoprotein belong to the ADAM (a disintegrin and metalloprotease domain) family. This single-pass type-1 824 aa transmembrane glycoprotein contains a signal sequence, an extracellular domain (pro-domain, catalytic domain, disintegrin-cysteine-rich domain, glycosylation sites), transmembrane and cytoplasmic domain. CD156b is a multi-domain protein that includes a Zn-dependent protease domain in the extracellular portion. It releases the soluble forms of TNF and TGF $\alpha$  from cells. CD156b is identified by its ability to cleave the transmembrane form of TNF between Ala-76 and Val-77 to generate the soluble form. CD156b is therefore a prospective therapeutic target in human cancer. CD156b is expressed on T cells, neutrophils, endothelial cells, monocytes, dendritic cells, macrophages, polymorphonuclear leukocytes and myocytes. And non-lymphoid tissues including heart, placenta, brain, muscle.

### **PURIFICATION**

The Rabbit IgG is purified by Epitope Affinity Purification

### **FORMULATION**

This affinity purified antibody is supplied in sterile Phosphatebuffered saline (pH7.2) containing antibody stabilizer

### **SPECIFICITY**

This antibody recognizes ~100 kDa of human CD156b. It also reacts with mouse. The other species are not tested.

### **STORAGE**

The antibodies are stable for 24 months from date of receipt when stored at -20oC to -70oC. The antibodies can be stored at 2oC-8oC for three month without detectable loss of activity. Avoid repeated freezing-thawing cycles.

### **APPLICATIONS/SUGGESTED WORKING DILUTIONS\***

- Western Blot: 0.1-1  $\mu$ g/ml
- ELISA: 0.01-0.1  $\mu$ g/ml
- Immunoprecipitation: 2-5  $\mu$ g/ml
- IHC: 2-10  $\mu$ g/ml
- Flow cytometry: Not tested
- Molecular Weight: 100.0
- Positive Control: Kidney Tissue
- Cellular Location: Cell Membrane

\*Optimal dilutions should be determined by researchers for the specific applications.

### **FOR RESEARCH USE ONLY.**

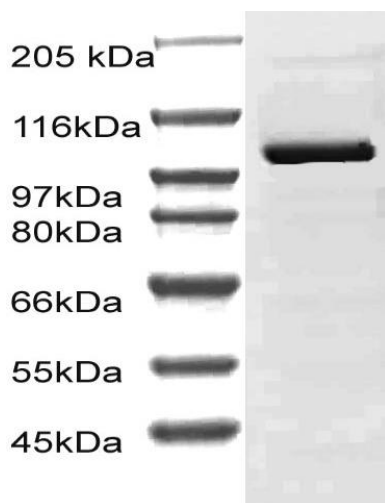
AbboMax, Inc 2528 Qume Drive, Suite 8, San Jose, California 95131, USA  
1 408-573-1898 (Tel). 1 408-573-1858 (Fax). [www.abbomax.com](http://www.abbomax.com) [info@abbomax.com](mailto:info@abbomax.com)



**FOR RESEARCH USE ONLY.**

AbboMax, Inc 2528 Qume Drive, Suite 8, San Jose, California 95131, USA  
1 408-573-1898 (Tel). 1 408-573-1858 (Fax). [www.abbomax.com](http://www.abbomax.com) [info@abbomax.com](mailto:info@abbomax.com)

## DATA ATTACHMENTS



Western Blot: The cell lysate derived from Jurkat was immunoprobed by Rabbit anti-CD156b (NT) (Cat#600-880) at 1:500. An immunoreactive band is observed around ~100 kDa.

## REFERENCES

### FOR RESEARCH USE ONLY.

AbboMax, Inc 2528 Qume Drive, Suite 8, San Jose, California 95131, USA  
1 408-573-1898 (Tel). 1 408-573-1858 (Fax). [www.abbomax.com](http://www.abbomax.com) [info@abbomax.com](mailto:info@abbomax.com)